

01-27-17 A10:53 IN

January 24, 2017

Office of Hopkins County Judge  
The Honorable Robert Newsom  
Post Office box 288  
Sulphur Springs, Texas 75483

*Farmers Electric Cooperative Member: Jim Butler*  
*Service Order Number: 1701002143*

**Dear Judge Newsom,**

Farmers Electric Cooperative, Inc. is requesting permission to re-route existing electrical power distribution facilities along CR 4779, which is located approximately 358 foot north of CR 4777, in Hopkins County, Texas.

Site location map and construction sketches are enclosed. The construction sketch details the proposed work. All road crossing will have a minimum vertical clearance of 22 feet.

**If you have any questions, please contact field engineering representative Matt Walker Office 903-455-1715 x.4043**

Sincerely,

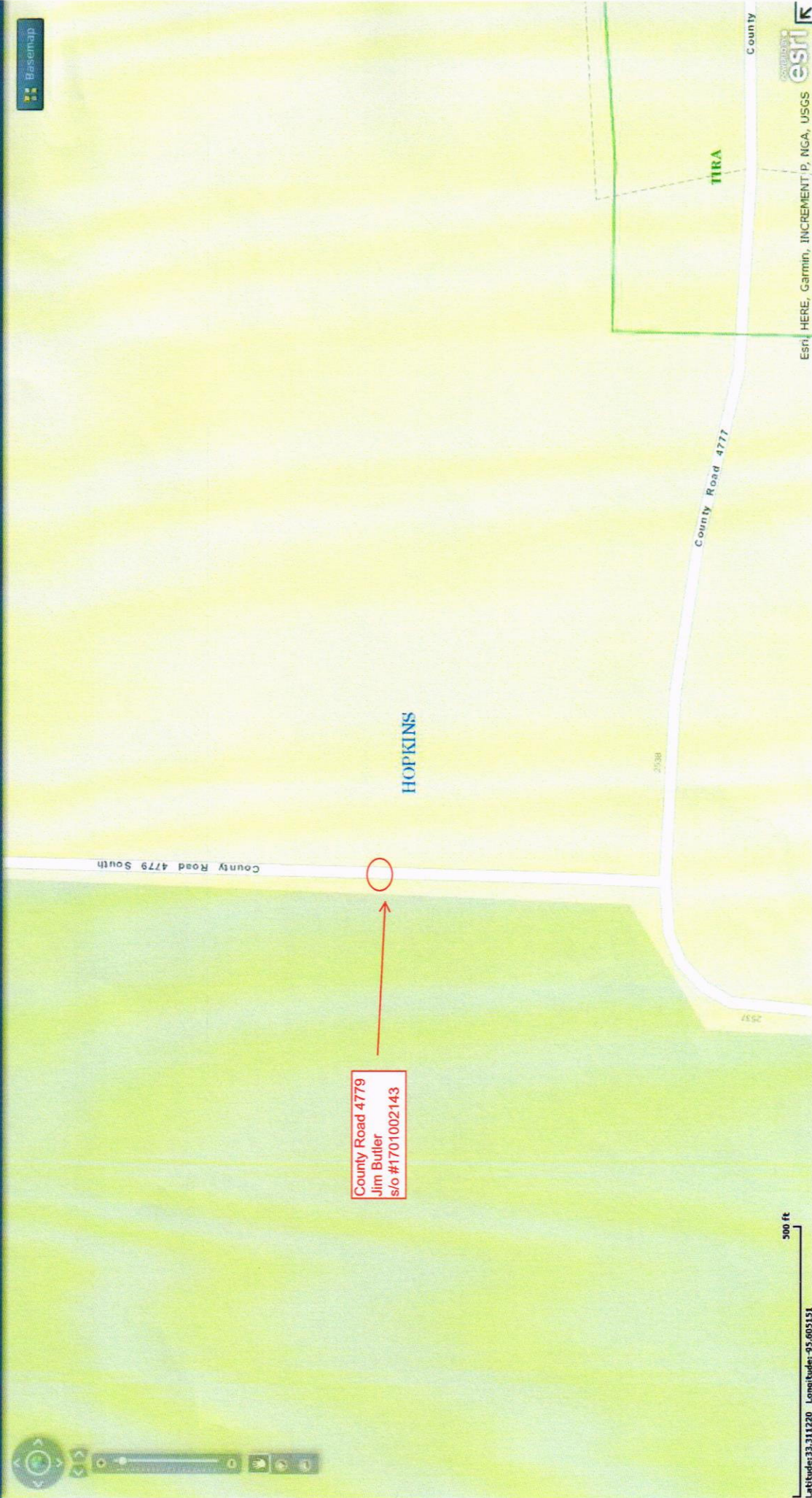
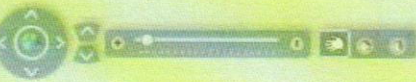
***Matt Walker***

Engineering Assistant  
mwalker@farmerselectric.coop

Enclosures

**Submitted by:**

Tricia Griffin  
Field Engineering Coordinator  
Office 903-453-0563 Fax 903-453-0663  
tgriffin@farmerselectric.coop

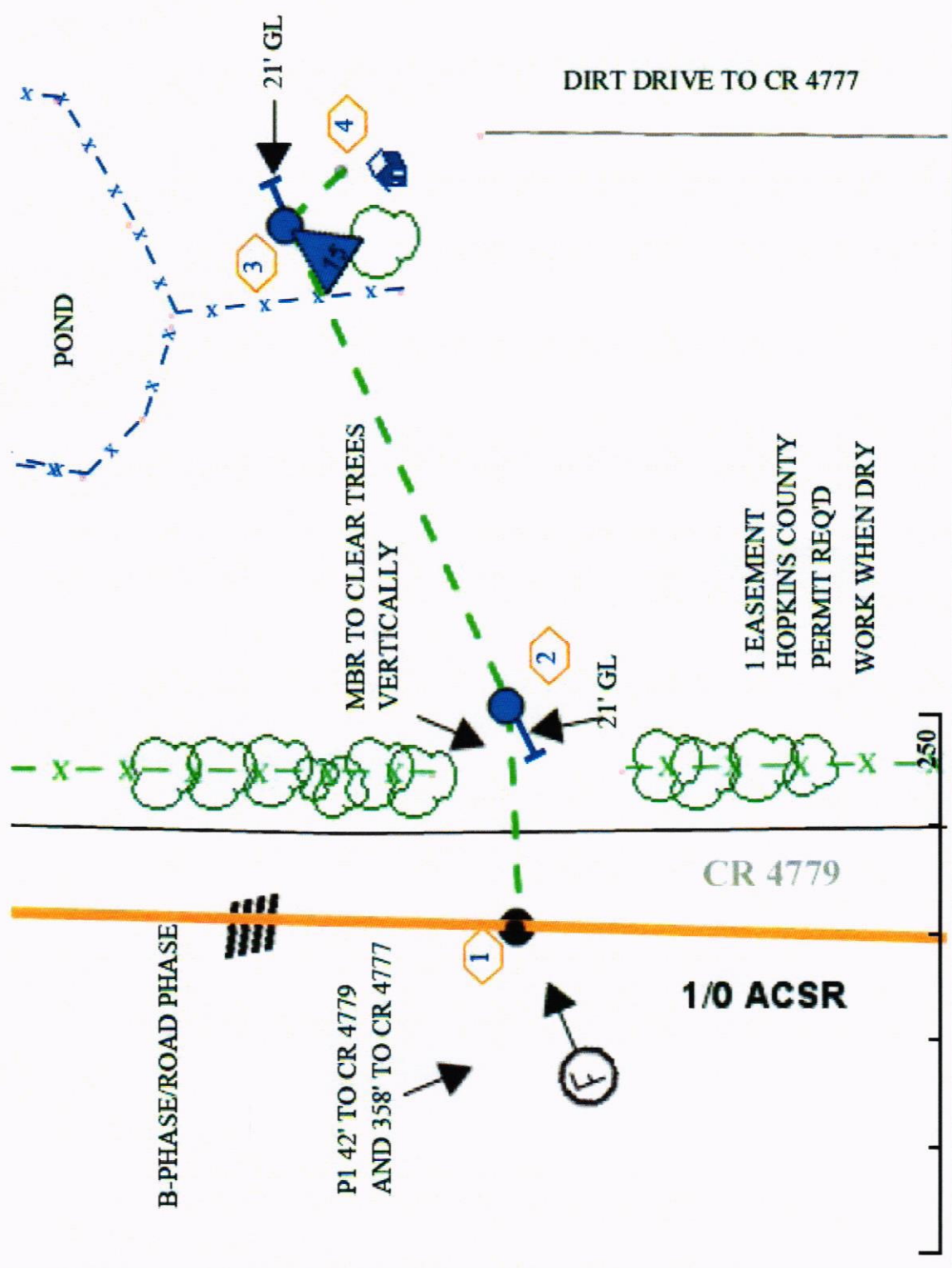


County Road 4779  
Jim Butler  
s/o #1701002143

900 ft

Latitude: 33.311220 Longitude: -95.605151

7.2KV



B-PHASE/ROAD PHASE

P1 42' TO CR 4779  
AND 358' TO CR 4777

DIRT DRIVE TO CR 4777

POND

MBR TO CLEAR TREES  
VERTICALLY

1 EASEMENT  
HOPKINS COUNTY  
PERMIT REQD  
WORK WHEN DRY

CR 4779

1/0 ACSR

250

1

2

3

4

21' GL

21' GL

F